



StarMOBILE™

Software Installation Guide

**A complete reference for installing and
updating your StarMOBILE™ software.**



INTRODUCTION..... 3

INSTALLING/UPDATING THE STARMOBILE DESKTOP CLIENT .. 3

 UPDATING MANUALLY USING THE *STARSCAN & STARMOBILE UPDATE CD*..... 3

Step 1: Before You Begin..... 3

Step 2: Insert the StarSCAN & StarMOBILE Update CD 4

Step 3: Follow the StarMOBILE Desktop Client Setup Wizard 5

Step 4: Launch the StarMOBILE Desktop Client..... 8

 UPDATING AUTOMATICALLY VIA DEALERCONNECT 9

UPDATING THE STARMOBILE DEVICE OS 10

 UPDATING AUTOMATICALLY USING THE *STARMOBILE DESKTOP CLIENT* 10

Step 1: Launch the StarMOBILE Desktop Client..... 10

Step 2: Follow the StarMOBILE Discovery Wizard 10

Step 3: Follow the StarMOBILE Update Wizard..... 11

 UPDATE MANUALLY USING THE *STARSCAN & STARMOBILE UPDATE CD*..... 12

Introduction

This guide outlines the steps required to:

- Initially install or update your StarMOBILE Desktop Client software on your PC
- Update your StarMOBILE device's operating system

If you have problems installing your StarMOBILE software, refer to the *StarMOBILE Software Installation Troubleshooting Guide* located at <https://dealerconnect.chrysler.com> by navigating to DealerCONNECT > Service > Repair > StarSCAN and StarMOBILE Tools. This document is also available from the *Download Center* at <http://www.dcctools.com>.

Installing/Updating the StarMOBILE Desktop Client

Updating manually using the *StarSCAN & StarMOBILE Update CD*

Step 1: Before You Begin

- Make sure your PC meets or exceeds the following requirements:
 - Windows 2000 SP4 or later
 - Pentium 166 MHz or later
 - 32MB RAM
 - 100MB of hard drive space available
- Locate the latest *StarSCAN & StarMOBILE Update CD*. This update CD is sent when software updates become available for the StarSCAN and StarMOBILE devices.

Information on the latest StarSCAN and StarMOBILE software releases can be found in the *Latest News* section of the DealerCONNECT website located at <https://dealerconnect.chrysler.com> by navigating to DealerCONNECT > Service > Repair > StarSCAN and StarMOBILE Tools. This information is also available in the *Latest News* section at <http://www.dcctools.com>.

Note: Your StarMOBILE kit was shipped with a *StarMOBILE Installation CD* and is intended for customers who have not yet received a *StarSCAN & StarMOBILE Update CD* via mail. If possible, **always use the *StarSCAN & StarMOBILE Update CDs* to install your StarMOBILE Desktop Client**, as it contains the latest enhancements to the installation process.

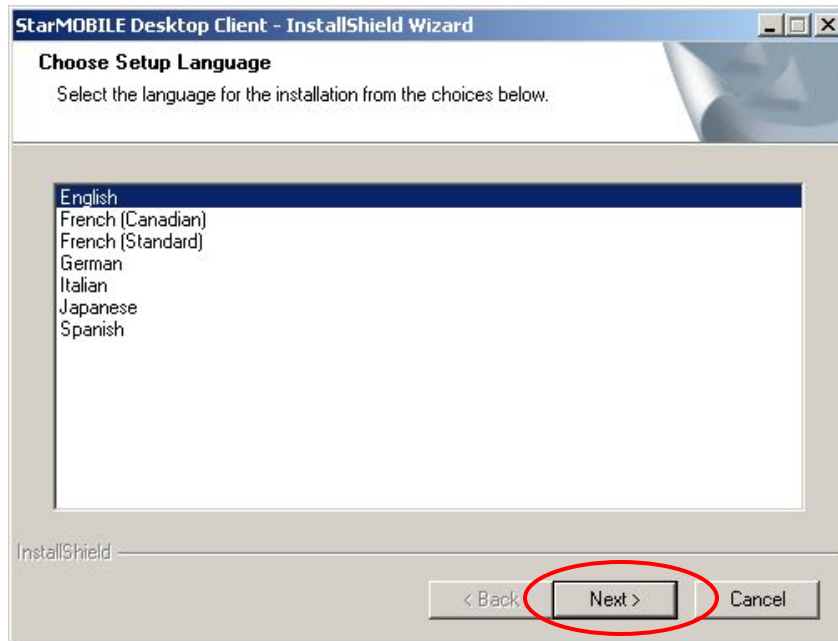
Step 2: Insert the StarSCAN & StarMOBILE Update CD

Insert the *StarSCAN & StarMOBILE Update CD* and choose "Install Desktop Client." This will launch the StarMOBILE Desktop Client InstallShield Wizard.

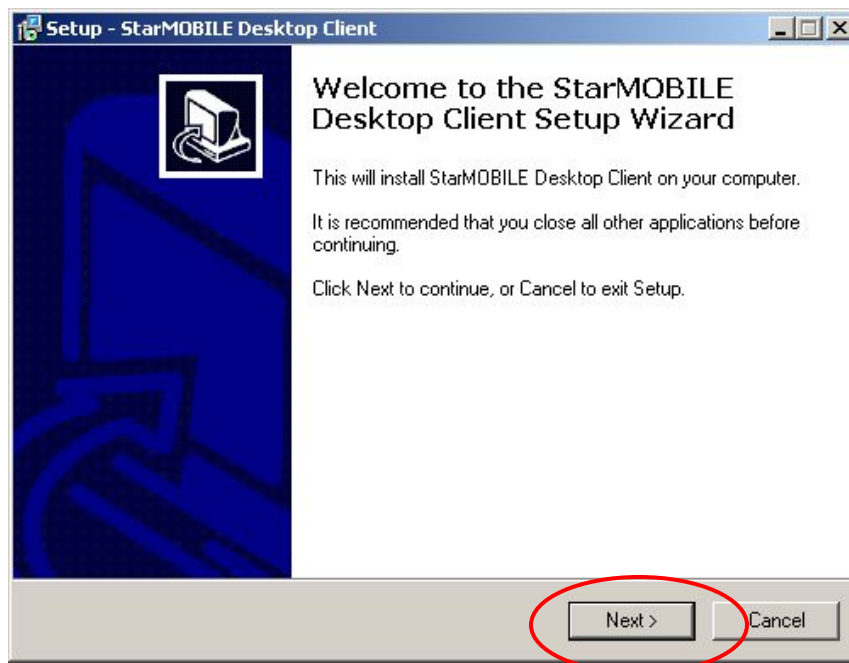


Step 3: Follow the StarMOBILE Desktop Client Setup Wizard

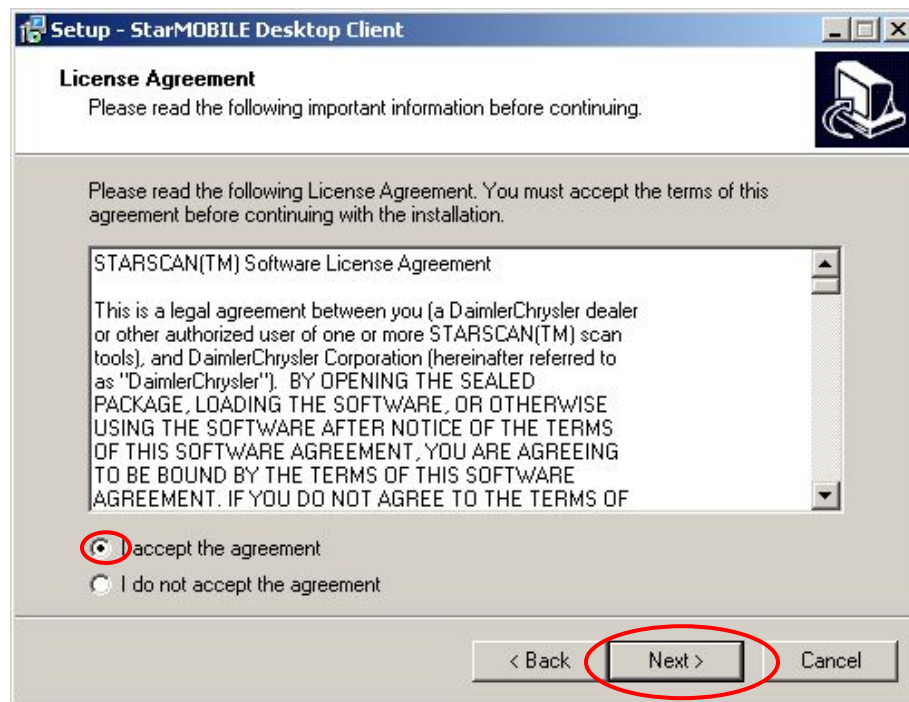
Choose the desired language and click *Next*.



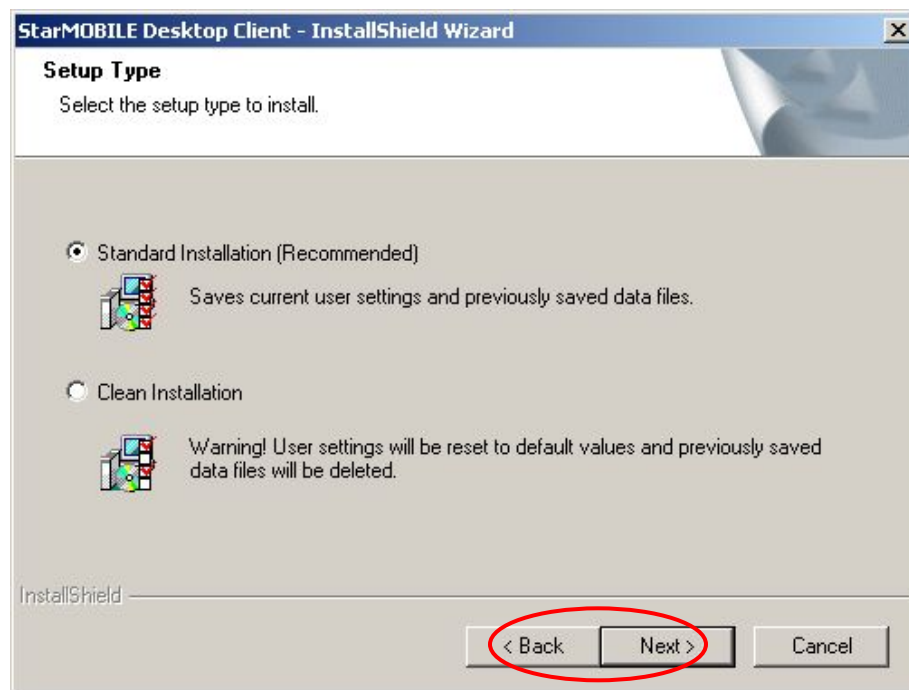
Follow the instructions and choose *Next* to continue the setup.



Read and accept to licensing terms, then click *Next*.



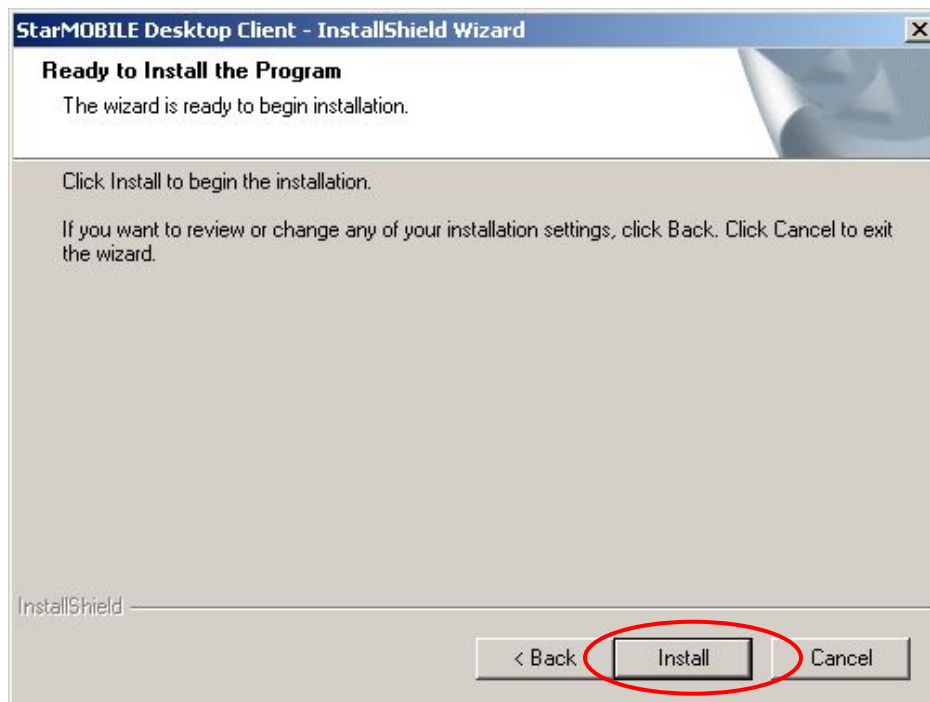
Choose the installation type, and click *Next*.



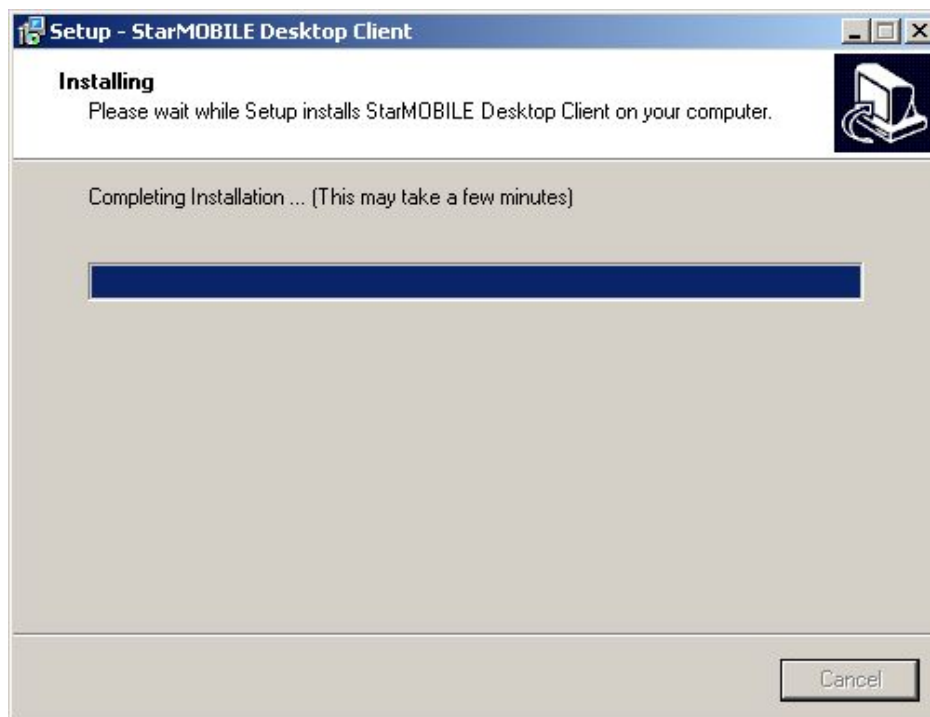
Software Installation Guide



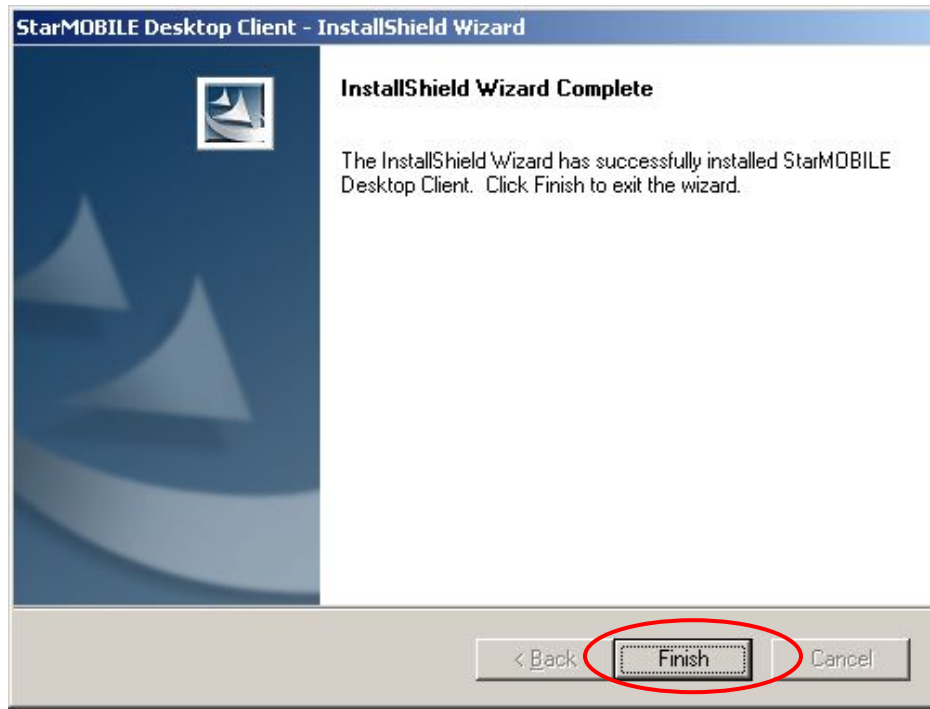
Click *Install* to begin the installation.



Wait while the Setup copies files to your computer.

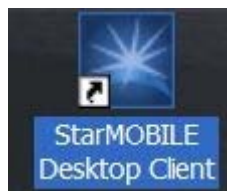


Click *Finish* to complete the installation.



Step 4: Launch the StarMOBILE Desktop Client

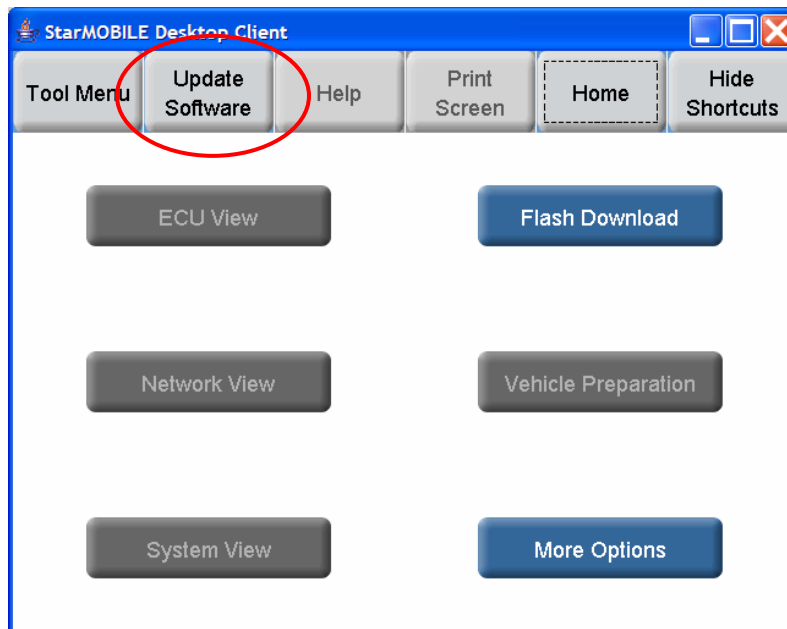
An icon will appear on the desktop upon successful installation. Double click the icon to verify that the StarMOBILE Desktop Client launches properly.



Updating automatically via DealerCONNECT

Updates to your StarMOBILE software are also available via DealerCONNECT. Your StarMOBILE Desktop Client will automatically alert you that software is available when you login to DealerCONNECT.

You can also check for updates from by selecting *Show Shortcuts > Software Updates* from your StarMOBILE Desktop Client application.



Updating the StarMOBILE Device OS

Your StarMOBILE Desktop Client will automatically upgrade your StarMOBILE Desktop Client (if an update is required) when it connects to your StarMOBILE device. You may also choose to upgrade your StarMOBILE device manually using the *StarSCAN & StarMOBILE Update CD*.

Updating automatically using the *StarMOBILE Desktop Client*

Follow the steps below to upgrade your StarMOBILE device OS automatically using the StarMOBILE Desktop Client.

Step 1: Launch the StarMOBILE Desktop Client

Click on the StarMOBILE Desktop Client icon on your PC's desktop to launch the StarMOBILE Desktop Client.



Step 2: Follow the StarMOBILE Discovery Wizard

Follow the steps in the StarMOBILE Discovery Wizard to connect to your StarMOBILE device.

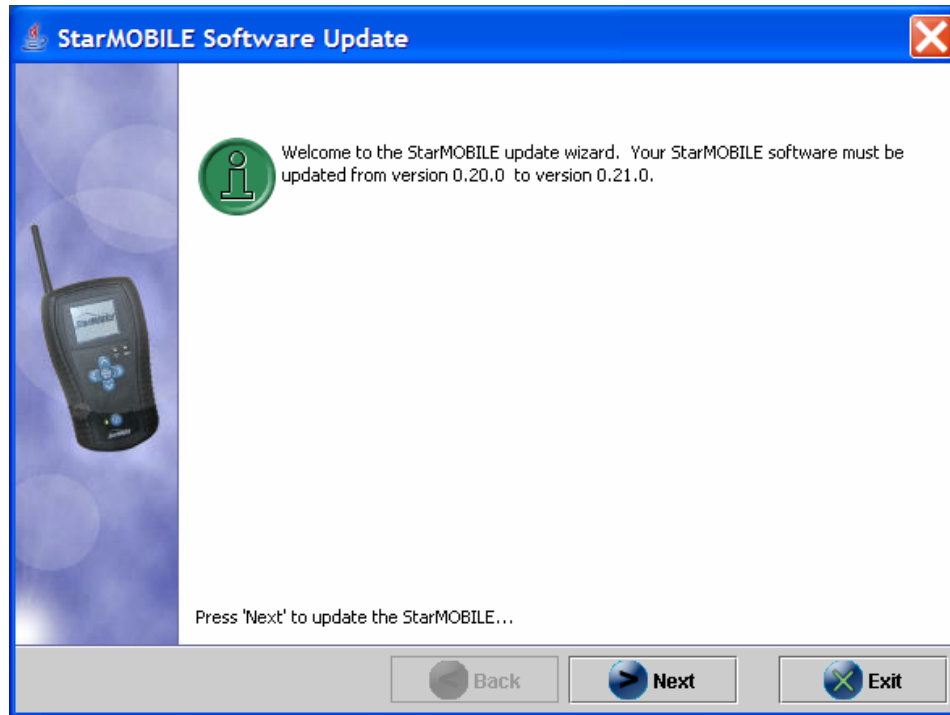


Software Installation Guide



Step 3: Follow the StarMOBILE Update Wizard

If your StarMOBILE device requires an upgrade, the StarMOBILE Desktop Client will automatically launch the StarMOBILE Update Wizard. Follow the steps of this wizard to automatically upgrade the software in your StarMOBILE device.



Software Installation Guide



Update manually using the *StarSCAN & StarMOBILE Update CD*

Insert the *StarSCAN & StarMOBILE Update CD* and choose "Download Software Updates." This will launch a wizard that will guide you through the steps required to manually update your StarMOBILE device.

