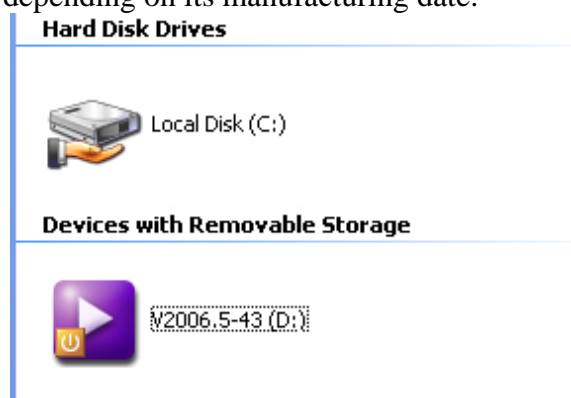


## How to Install Ford IDS

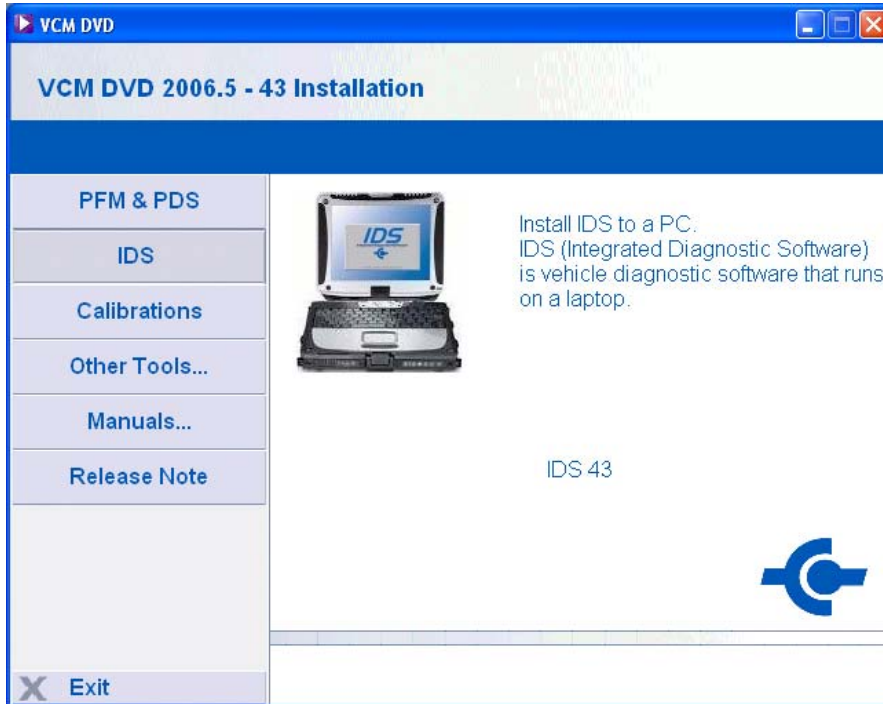
1. Close any open programs make sure you have at least 700mb free.
2. Insert the VCM disk into your DVD Rom drive.
3. DVD should automatically run the disk, if not go to My Computer> and open the Purple Icon. **Note:** In this picture its labeled V2006.5-43, yours may be different depending on its manufacturing date.



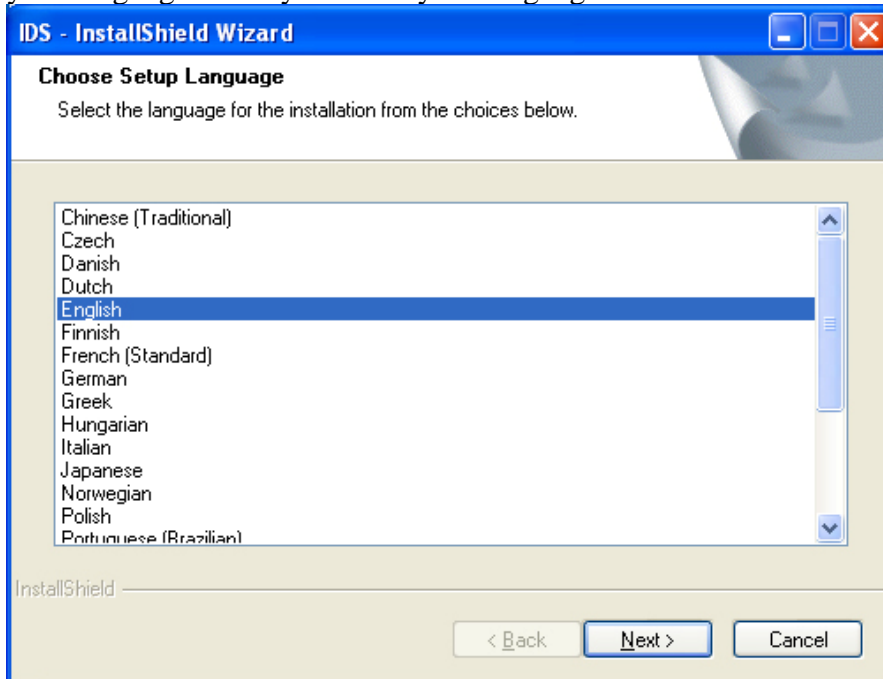
4. Once you have opened the program or it has begun to run you will be presented with this screen.



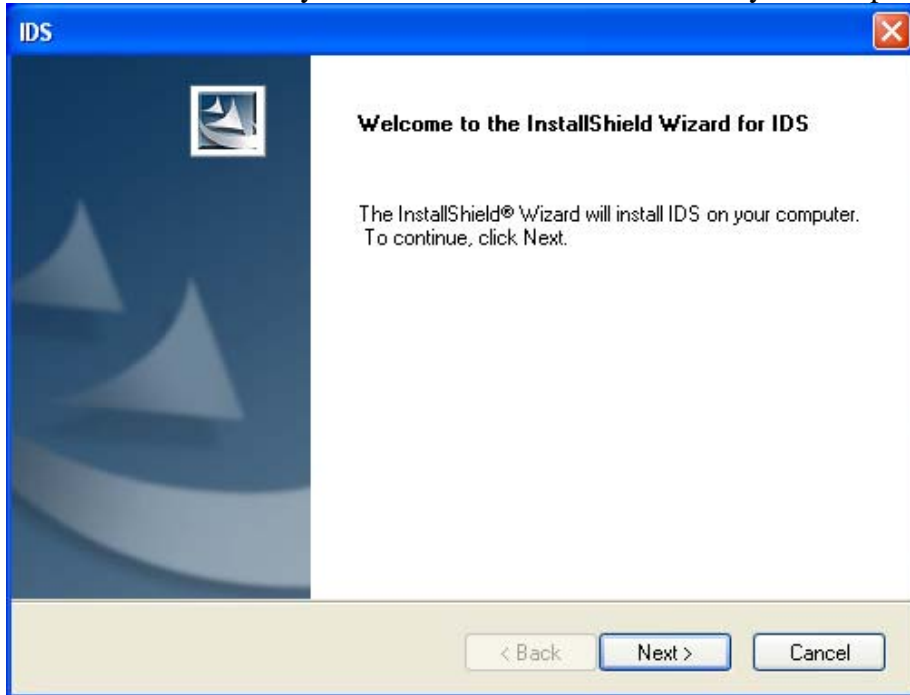
5. Click on IDS.



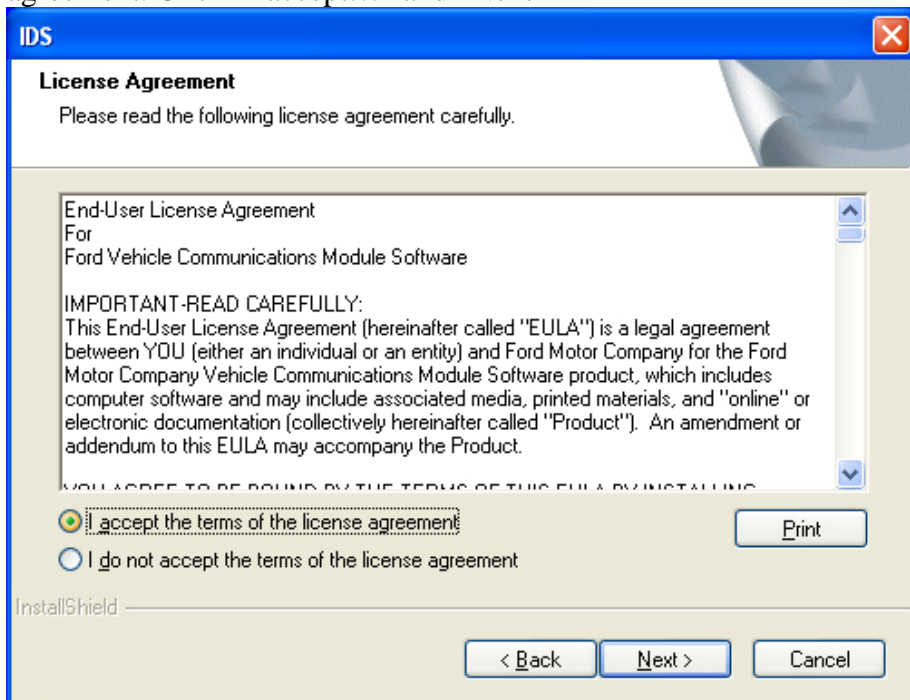
6. Another window will open once the installation begins. It will ask you to select your language. After you select your language click "Next"



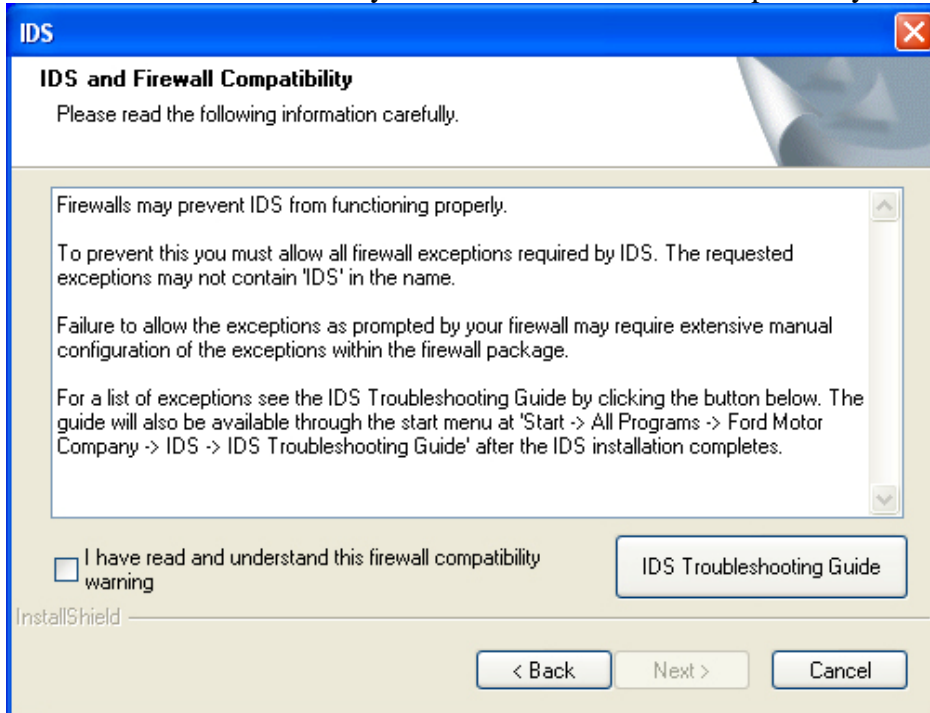
7. The next window tells you that IDS will be installed onto your computer.



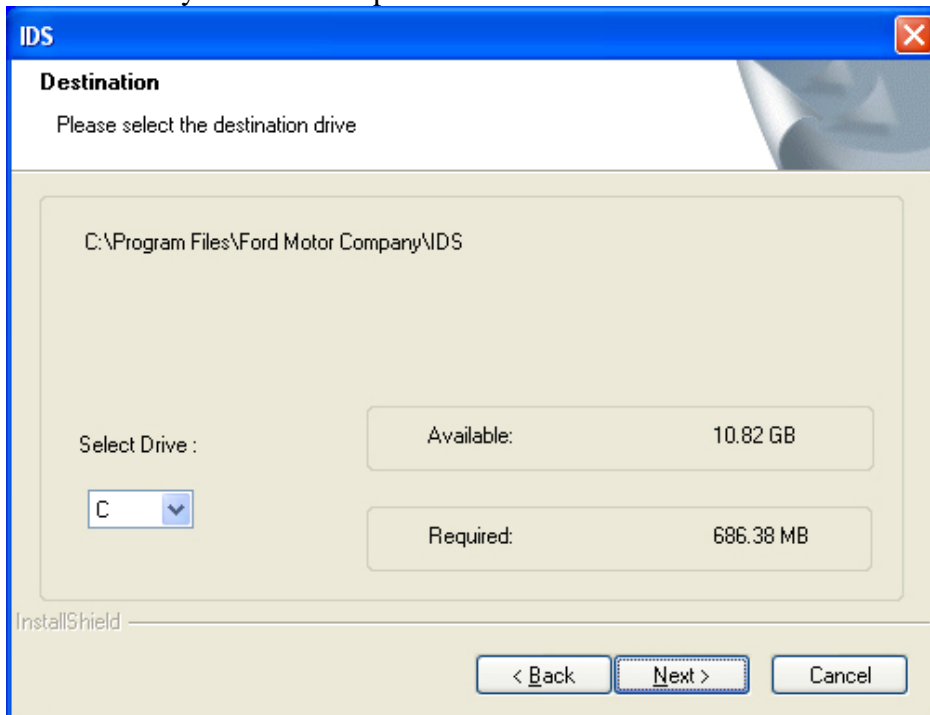
8. After clicking "Next" the End User License will come up asking for your agreement. Click "I accept..." and "Next"



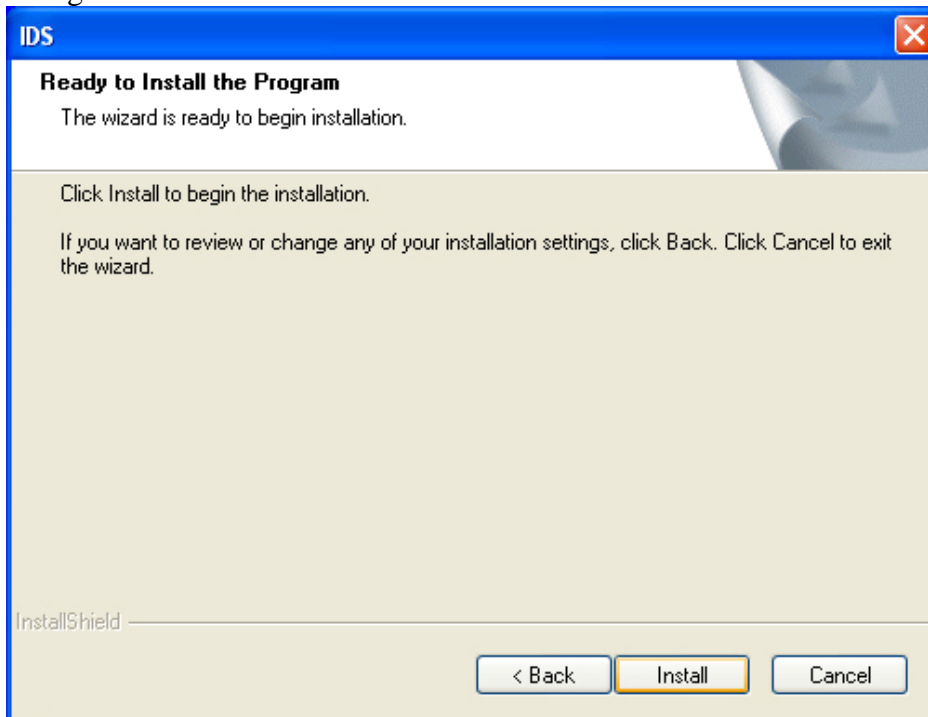
9. The next screen will inform you of IDS and Firewall Compatibility.



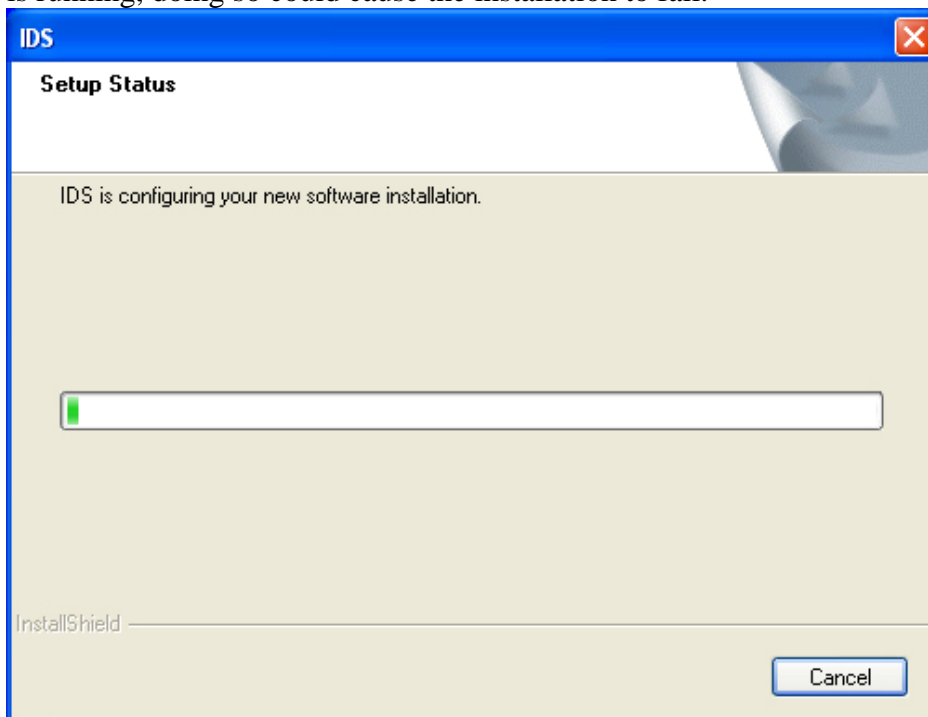
10. After Reading the Information Carefully, click “I have read and understand...” and click “Next.” **Note:** If you are unsure if IDS will work with your Firewall click IDS Troubleshooting Guide. It is best if you do not use any firewall or antivirus.
11. The next screen will ask you where you want to install IDS at. Click “Next.” **Note:** Unless you have multiple Harddrives the C Drive will be the default drive.



12. The next window tells you that IDS is ready to be installed. If you are satisfied with your selections in the previous steps click “Install.” If you want to make any changes click “Back.”

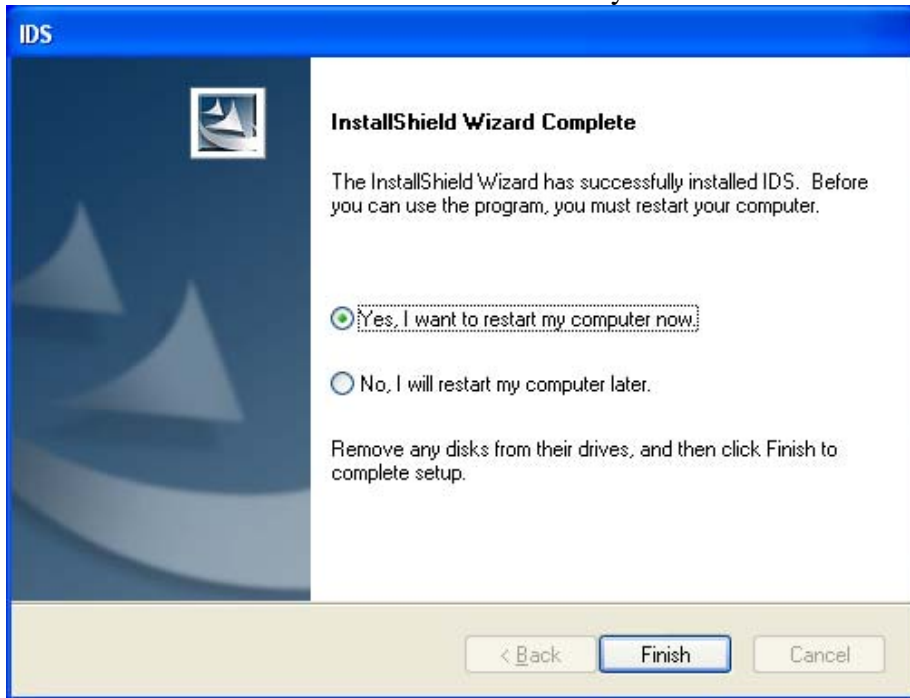


13. Now the installation has begun, it is possible for multiple windows to open while the program is installing. Do **NOT** manually close any of these while the program is running, doing so could cause the installation to fail.



14. If you have a firewall or virus protection installed on your computer it may warn you not to install certain features of IDS. Do **NOT** disable or prevent any feature of IDS, doing so will prevent IDS to from running properly.

15. After IDS has installed onto your computer you will need to restart. If for any reason you choose not to restart you can close IDS by clicking Exit on the main menu. **Note:** Some features will not work until you restart.



16. After you have restarted the computer proceed to the Calibration installation. You will not be able to Flash the vehicle modules without the calibrations.